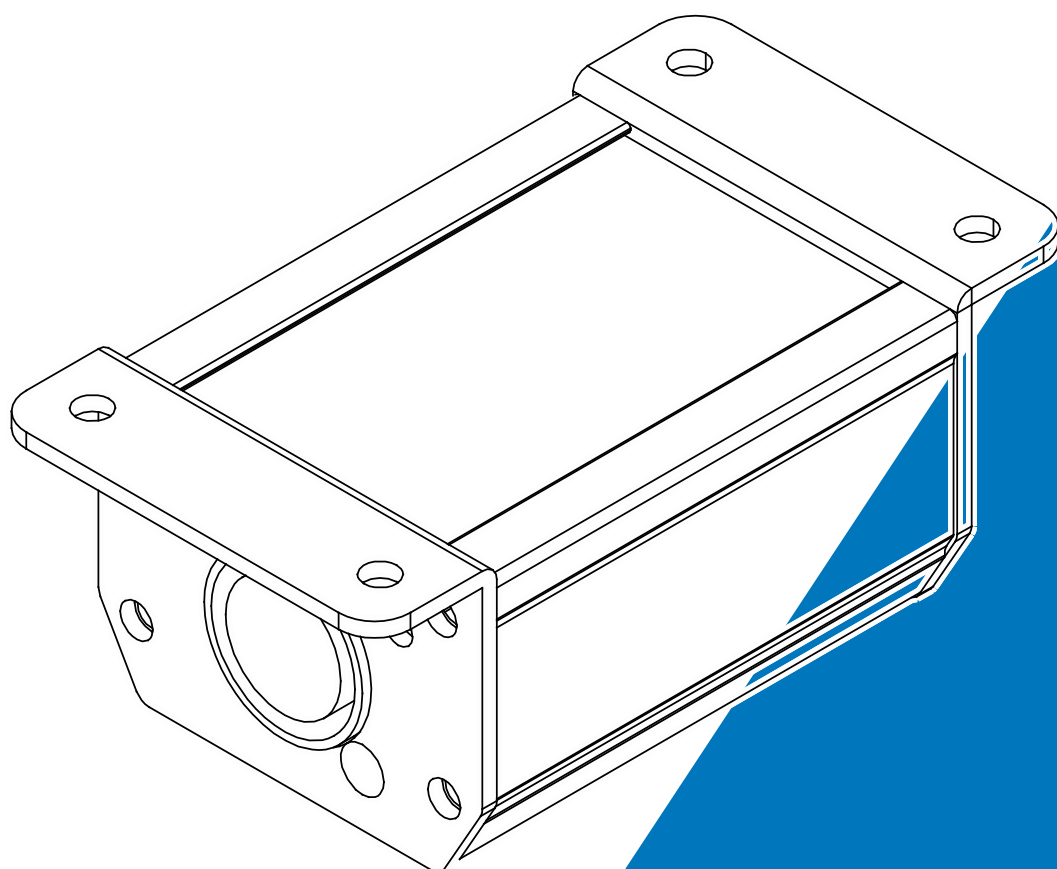




Uploader

IU-01



User Manual

Please read the instruction carefully before use

1. Safety Instruction



WARNING

Please read carefully the instruction, which includes important information about the installation, usage and maintenance.

- Please keep this User Guide for future consultation. If you sell the unit to another user, be sure that they also receive this instruction booklet.
- Unpack and check carefully that there is no transportation damage before using the unit.
- The unit is for indoor use only. Use only in a dry location.
- In the event of serious operating problem, stop using the unit immediately.
- The housing must be replaced if they are visibly damaged.
- There are no user serviceable parts inside the unit. Do not open the housing or attempt any repairs by yourself. In the unlikely event your unit may require service, please contact your nearest dealer.

Product Items:

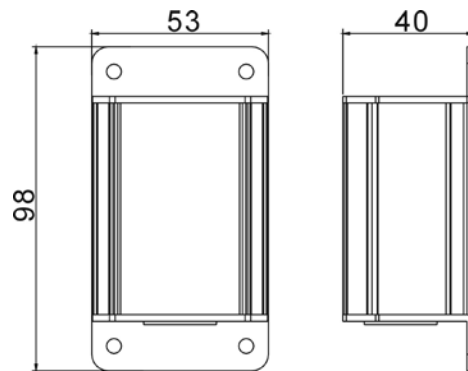
- IU-01
- 1 x USB cable
- 1 x CD

2. Features

Dimension/Weight:

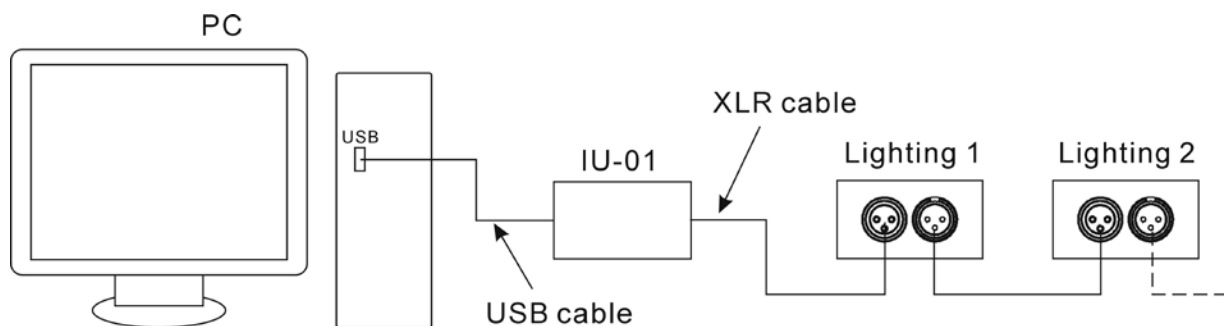
98 x 53 x 40mm, 0.2kg

3.8"x2.1"x1.6" in, 0.44lbs



3. Connection

Connect as below to update program for lightings:



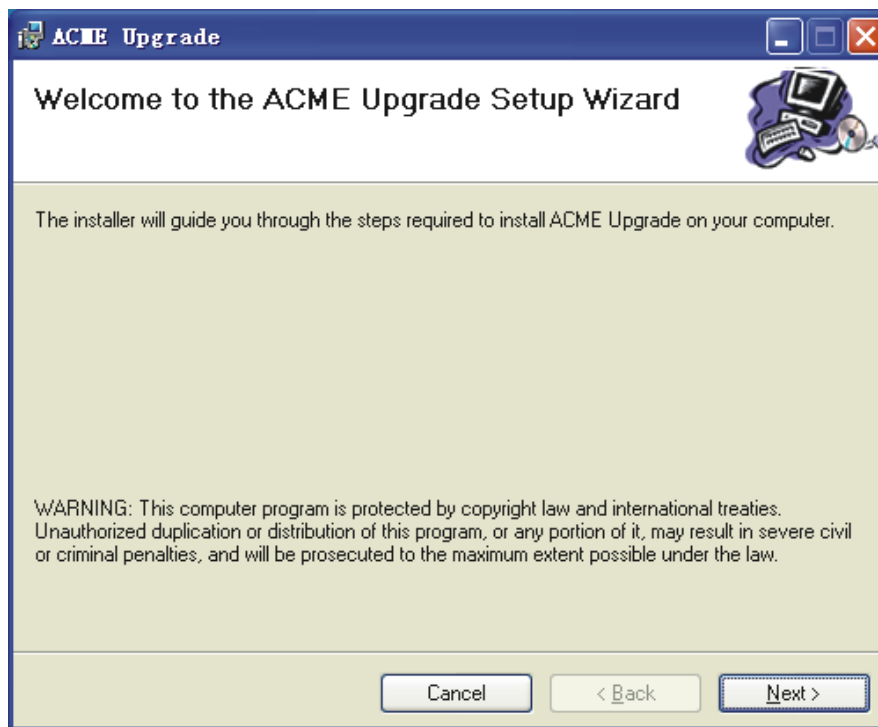
4. Operation

4.1 Download ACME Upgrade setup software from our web site and install it.

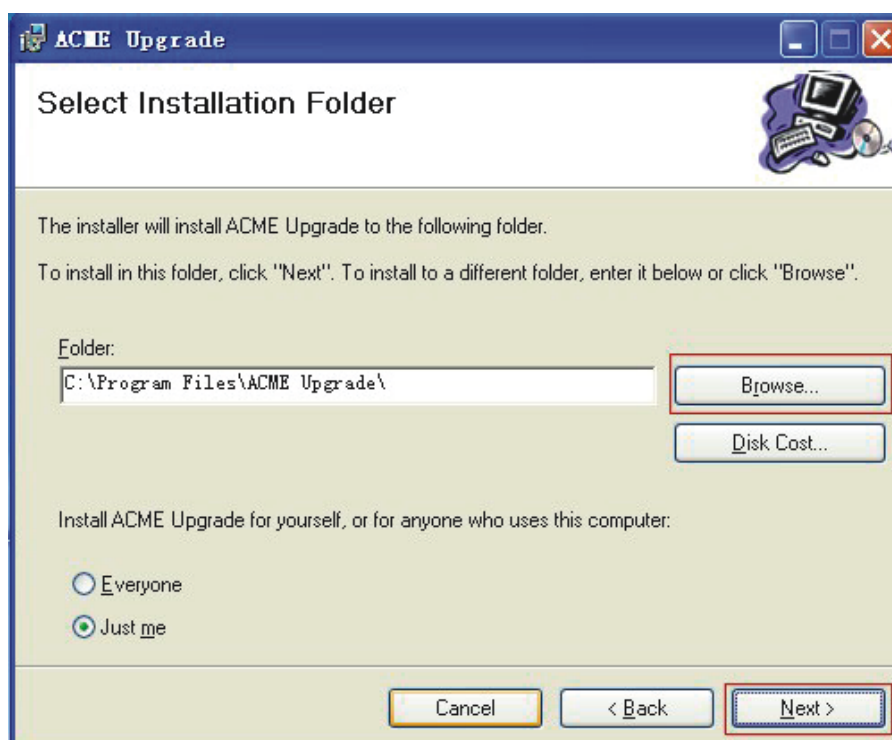


setup.exe
Setup

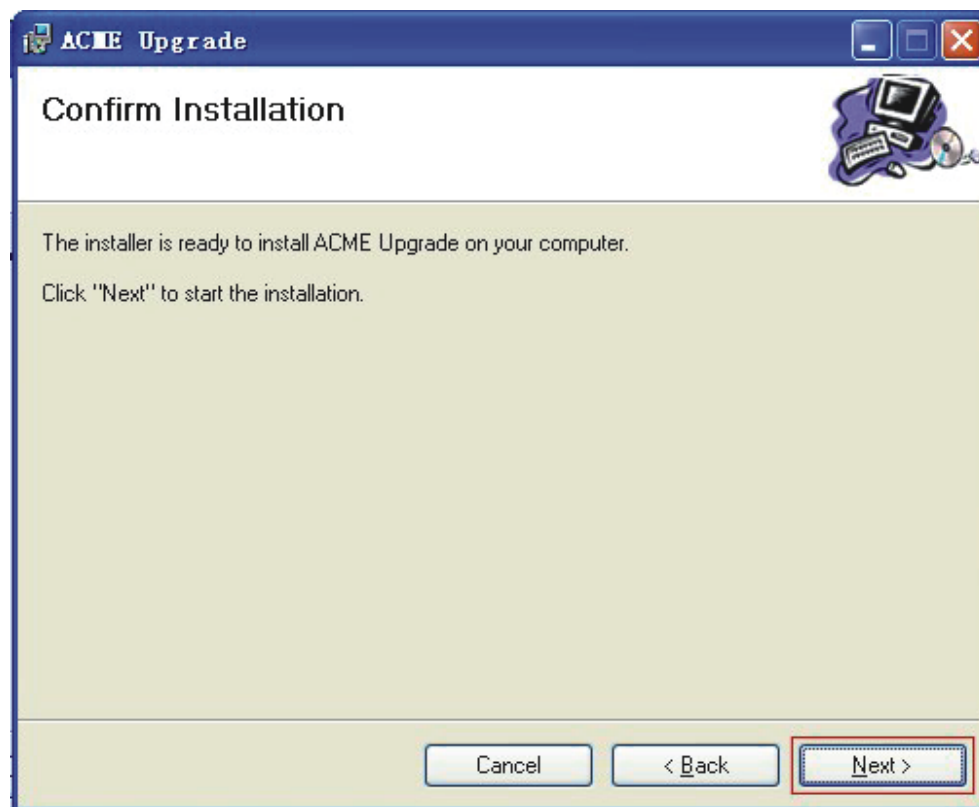
A. Double-click setup file, click “Next” to confirm.



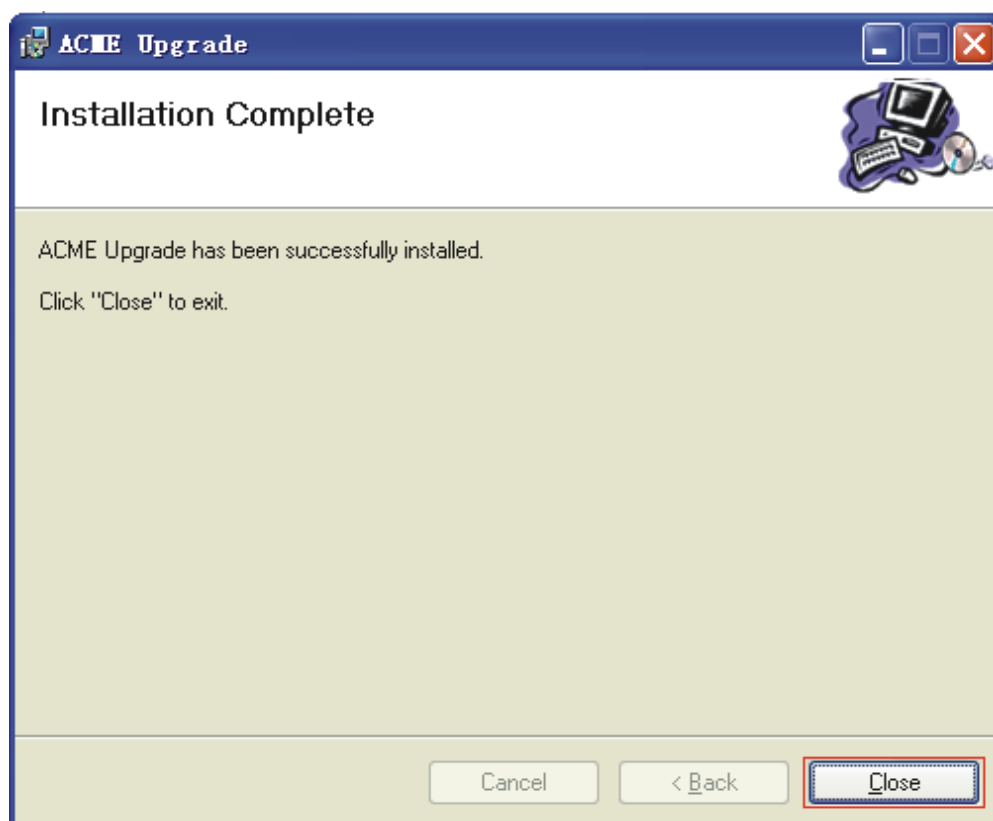
B. Click “Browse” select path to store installation files, Click “Next” to confirm.



C. Click “Next” to start install.

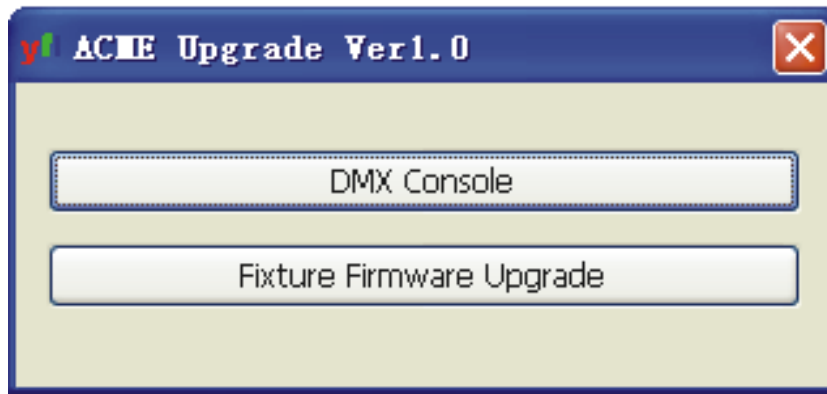


D. Click "Close" to finish installation.



4.2 Update Program

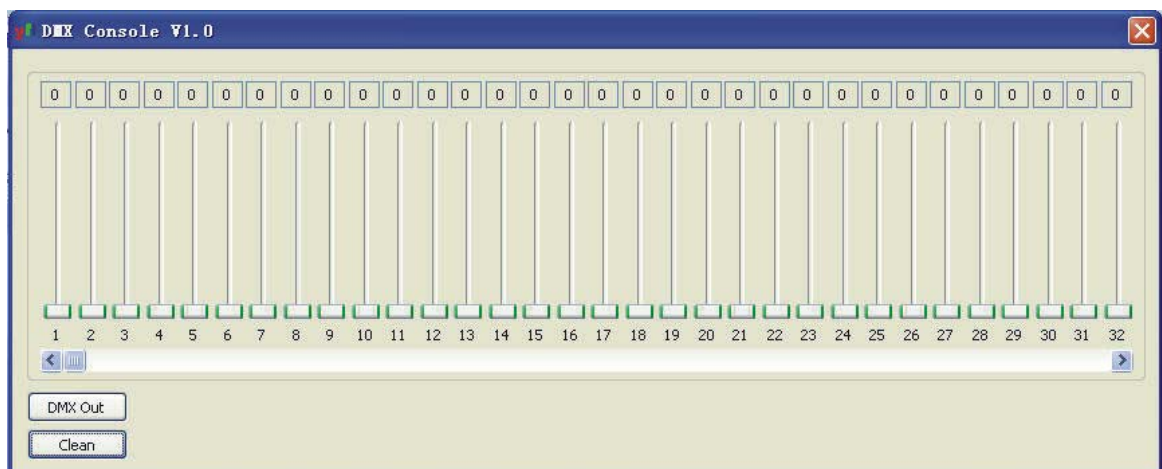
A. Double- click the shortcut on the desktop




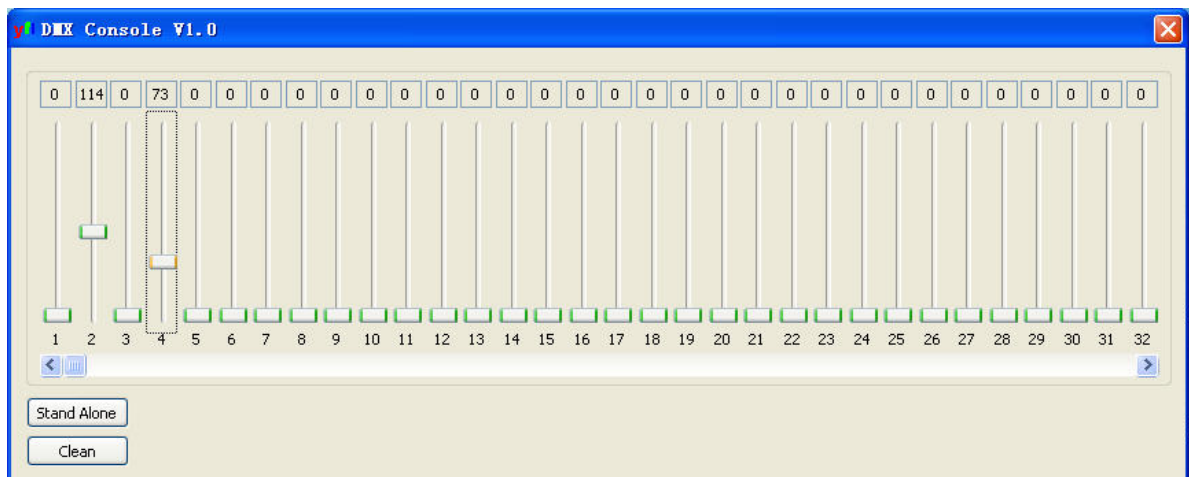
Click “DMX Console” to export DMX signal. Click “Fixture Firmware Upgrade” to update software for fixtures.

B. DMX signal output

Click “DMX Console”, the red signal indicator LED of IU-01 will be on and pop-out the dialog box shown below



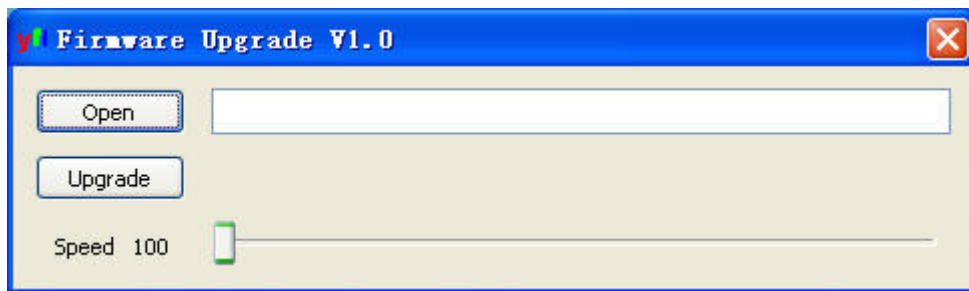
Total 512 channels DMX output, click “DMX Out” to start output, the green signal indicator LED of IU-01 blinking, push  to adjust the value.




Click “Clean” to clean all settings. Click “Stand Alone” to stop, the green signal indicator LED of IU-01 becomes off.

C. Update software

Click “DMX Console”, the red signal indicator LED of IU-01 will be on and pop-out the dialog box shown below



Click “Open” to select a ACME software file that download from our web site, push  to set upgrade speed from 100 (fastest) to 1 (slowest). Click “Upgrade” to upgrade software for lightings.

Declaration of Conformity

We declare that our products (lighting equipments) comply with the following specification and bears CE mark in accordance with the provision of the Electromagnetic Compatibility (EMC) Directive 89/336/EEC.

EN55103-1: 2009 ; EN55103-2: 2009; EN62471: 2008;
EN61000-3-2: 2006 + A1:2009 + A2:2009; EN61000-3-3: 2008.

&

Harmonized Standard

EN 60598-1:2008 + All:2009; EN 60598-2-17:1989 + A2:1991;
EN 62471:2008; EN 62493: 2010
Safety of household and similar electrical appliances
Part 1: General requirements

Innovation, Quality, Performance