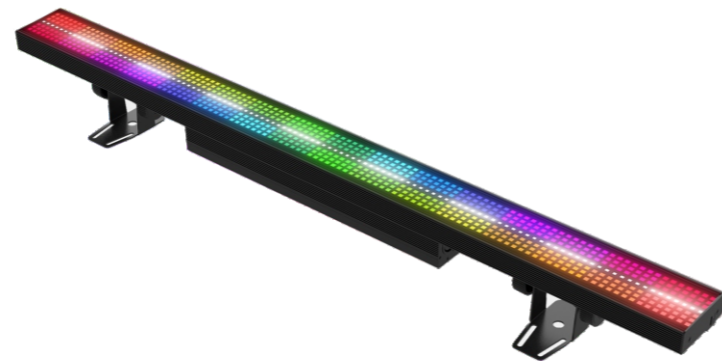


# FLASHDOT™

## STROBE 3

### FEATURES

- Smooth dimming and outstanding color mixing
- Ultra-high stunning output with multiple speeding strobes
- Two types of LEDs are used: 112 pcs CW LED in the center and 672 pcs RGB components around the tube.
- 32 x RGB LED zones and 16 x CW strobe tube zones can be controlled individually
- Can be adjusted 180° on double mounting brackets



### TECHNICAL SPECIFICATIONS

#### Specifications

- Light Source 1 : 672 x 0.3W RGB LED
- Light Source 2 : 112 x 3W CW LED
- Beam Angle: 116°

#### Control

- DMX Channel: 6/13/18/38/112/16/32/64/14/20
- Control Mode: DMX512, RDM
- Firmware Upgrade via DMX link

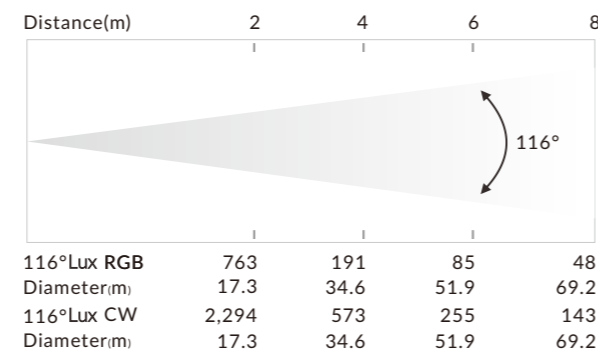
#### Construction

- Display: OLED display
- Data In/Out: 3-pin or 5-pin XLR
- Power In/Out: Power Connector in/out
- Protection Rating: IP20

#### Electrical and Physical

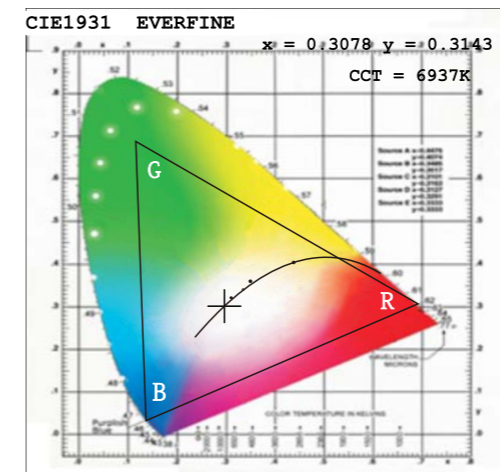
- Power Voltage Range: 100-240V~ 50/60 Hz
- Power Consumption: 315W
- Dimensions: 1000 x 111 x 104mm (39.4" x 4.4" x 4.1")
- Carton Dimension: 1,090 x 280 x 340mm (42.9" x 11.0" x 13.4")
- Weight: 4.7 kg (10.36 lbs)

### PHOTOMETRICS DIAGRAM

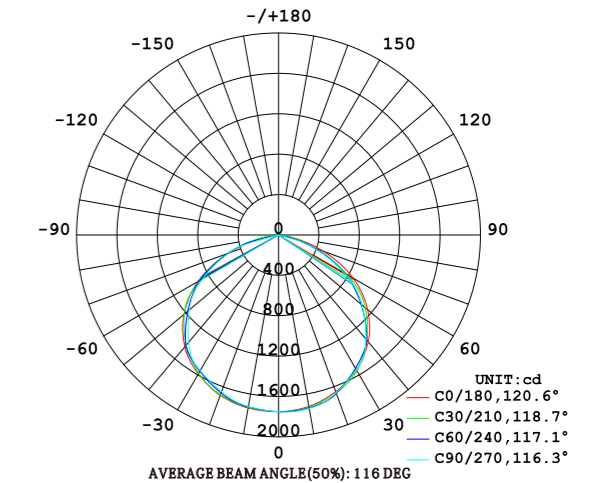


### FUNCTIONAL EFFECT

CIE1931 CHROMATICITY COORDINATES



LUMINOUS INTENSITY DISTRIBUTION DIAGRAM



### DIMENSIONS

