

PIXEL LINE IP

STROBE 3 IP

FEATURES

- Light Sources:
 - 672pcs 0.5W RGB LED (can be divided into 32 controllable sections)
 - 112pcs 3W CW LED (can be divided into 16 controllable sections)
- Beam Angle:
 - RGB Beam Angle: 101°
 - CW Beam Angle: 108°
- Field Angle:
 - RGB Field Angle: 149°
 - CW Field Angle: 152°
- Outstanding color effects
- High output strobe effects
- Multiple units can be connected tool free
- Smart Glass technology for DMX controllable frost effects
- Four dimming curves

TECHNICAL SPECIFICATIONS

Version

- Version 1: STROBE 3 IP (Omega Bracket Mounting)
- Version 2: STROBE 3 IPS (Sliding Adjustable Clamp)
- Note: Different versions cannot be connected together

Light Source

- Light Sources:
 - 672 x 0.5W RGB LED
 - 112 x 3W CW LED
- Beam Angles:
 - RGB Beam Angle: 101°
 - CW Beam Angle: 108°
- Field Angles:
 - RGB Field Angle: 149°
 - CW Field Angle: 152°

Optical System

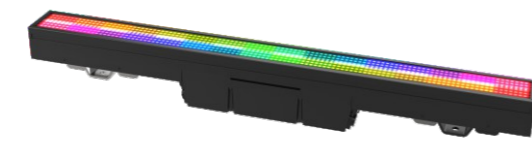
- Advanced optical design for seamless effects
- SMART Glass technology for DMX controllable frost effects

Control

- 4-Button touch panel
- Display: OLED display
- Protocols: DMX512, RDM, Art-Net, sACN
- DMX Protocol modes: 11
- Control channels: 7/15/21/39/112/17/33/65/68/117/70
- Firmware Upgrade: Upgrade via DMX link

Electrical and Connectors

- Input Voltage Range: 100-240VAC, 50/60Hz
- Power consumption: 420W
- Power In/Out: Waterproof connections (TRUE1 type)
- Data In/Out: Waterproof 3-pin or 5-pin XLR connectors, RJ45



OMEGA BRACKETS VERSION



SLIDING ADJUSTABLE CLAMP POSITION VERSION

Fixture Specification

- Width: 1,000 mm (39.4")
- Depth: 124 mm (4.9")
- Height: 90 mm (3.5")
- Weight:
 - 8.3 kg (18.3 lbs.) - version 1 with omega brackets
 - 7.3 kg (16.1 lbs.) - version 2 with sliding adjustable clamp

Carton Specification

- Width: 1,085 mm (42.7")
- Depth: 195 mm (7.7")
- Height: 320 mm (12.6")
- Weight: 10.5 kg (23 lbs.)

Flight Case Specification (ordered separately)

- 8-Hole Case:
 - Width: 1,209 mm (47.5")
 - Depth: 565 mm (22.2")
 - Height: 655 mm (25.8")
 - Weight: 115 kg (254 lbs.)
- 10-Hole Case:
 - Width: 1,209 mm (47.5")
 - Depth: 661 mm (26.0")
 - Height: 695 mm (27.0")
 - Weight: 139.5 kg (308 lbs.)

Work Environment

- Maximum ambient temperature: 40°C
- Minimum operating temperature: -10°C
- Maximum surface temperature: 65°C
- Protection rating: IP66



Approvals

- CE compliant
- cETLus compliant

Installation

- Horizontal or vertical mounting
- Universal operating position
- 2, omega brackets (optional with 2 foldable fixed clamps)
- Safety cable mounting point

Included Items

- Digital User Manual
- Power Cable (with TRUE1 type connector)
- 2, Omega Brackets (optional with 2 x foldable fixed clamps)

Optional Accessories (with item code)

- Flight Case:
 - 3205096010 (Ten-hole case)
 - 3205096009 (Eight-hole case)
- Signal Line: 3-pin or 5-pin IP signal line
- Safety Cable: 2060000200 (SW-02)
- Customized Foldable Clamps & Floor Stand w/ Omega Bracket (63582498)
- Customized Floor Stand w/ Omega Bracket (63582956)
- Customized Floor Stand w/o Omega Bracket (63582554)



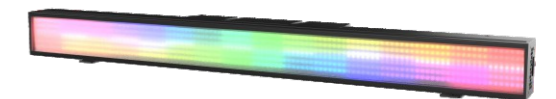
COLOR MAPPING



LINEAR STROBE



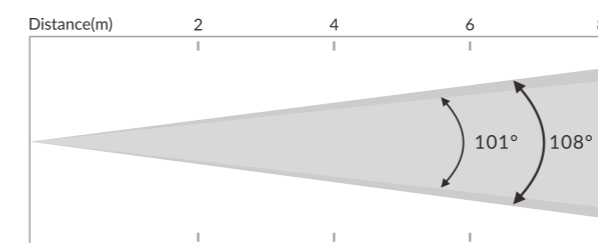
FULL OPEN TRANSPARENT



FULL OPEN BY FROSTED

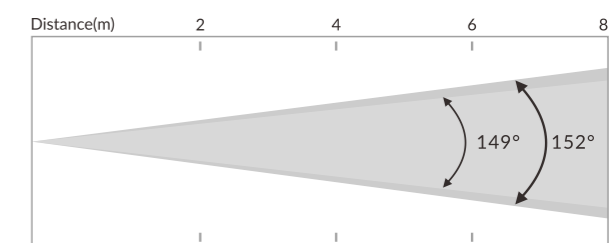
PHOTOMETRICS DIAGRAM

Beam Angle:



101° RGB Lux	1,163	291	129	73
Diameter(m)	12.7	25.3	38	51
108° CW Lux	2,919	730	324	182
Diameter(m)	5.7	11	16	21.7

Field Angle:



149° RGB Lux	1,163	291	129	73
Diameter(m)	14.2	28.4	42.6	56.8
152° CW Lux	2,919	730	324	182
Diameter(m)	16.4	32.8	49	61

EXTERIOR / OUTDOOR

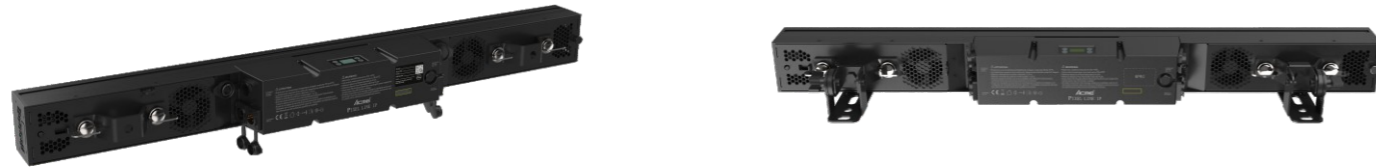
EXTERIOR / OUTDOOR

PIXEL LINE IP

STROBE 3 IP

INSTALLATION

1. OMEGA BRACKETS VERSION

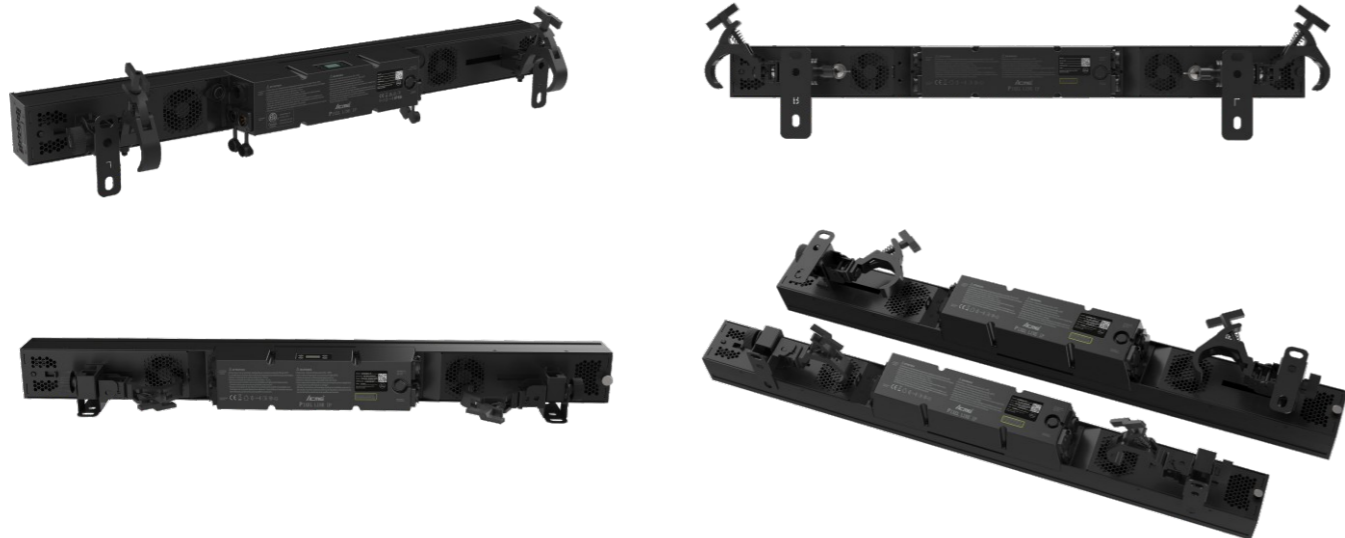


Customized Floor Stand w/o Omega Bracket
(63582554)

Customized Floor Stand w/ Omega Bracket
(63582956)

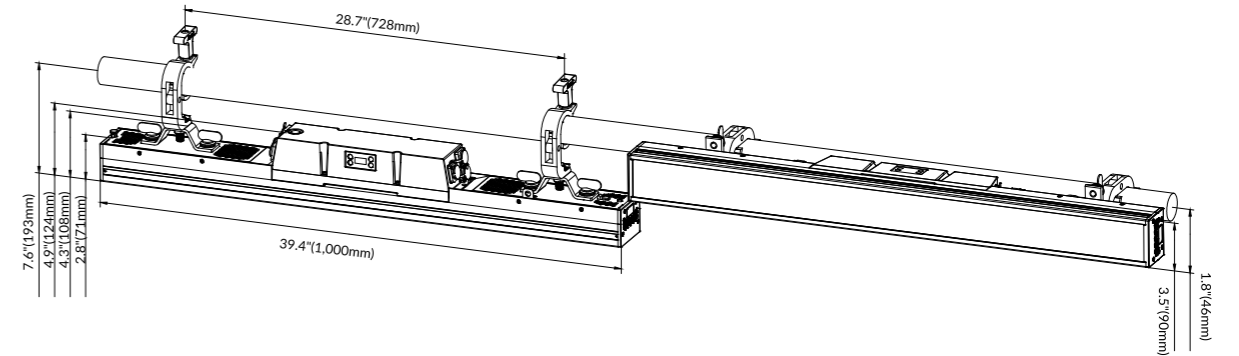
Customized Foldable Clamps &
Floor Stand w Omega Bracket
(63582498)

2. SLIDING ADJUSTABLE CLAMP POSITION VERSION



DIMENSIONS

1. OMEGA BRACKETS VERSION



2. SLIDING ADJUSTABLE CLAMP POSITION VERSION

